

3b Clos Broniestyn, Pontypridd, CF37 1DW

£190,000

Nestled in the tranquil residential area of Maesycloed, this attractive modern mid-terrace house presents an excellent opportunity for first-time buyers. The property boasts a charming façade and is situated on a quiet side street, offering delightful views over the surrounding landscape.

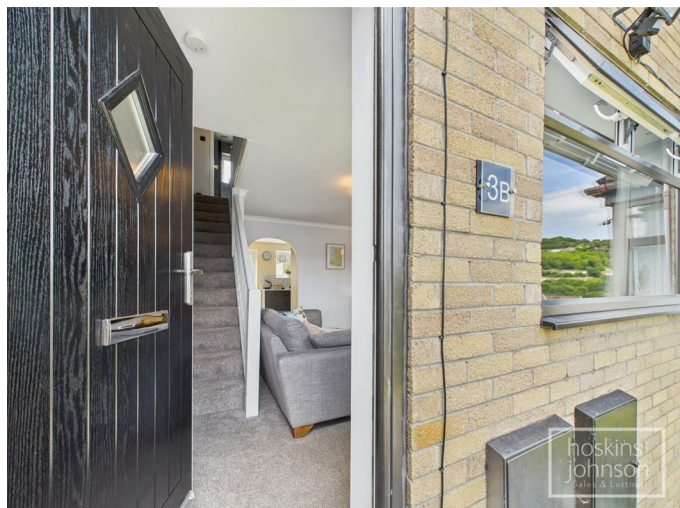
Upon entering, you will find a welcoming reception room that provides a perfect space for relaxation or entertaining guests. The newly fitted kitchen/diner is a standout feature, equipped with modern appliances that make cooking and dining a pleasure. This area is designed to be both functional and stylish, ideal for those who enjoy culinary pursuits.

The house comprises two well-proportioned bedrooms, providing ample space for rest and personalisation. The first-floor shower room has been recently refitted, ensuring a fresh and contemporary feel.

Outside, the property benefits from a lovely garden, perfect for enjoying the outdoors, along with off-road parking for one vehicle, adding to the convenience of this delightful home.

This mid-terrace house is not only appealing in its design but also offers a comfortable and practical living space, making it an ideal choice for those looking to step onto the property ladder. With its modern amenities and serene location, this home is sure to attract interest. Don't miss the chance to make it yours.

Entrance



Composite double glazed entrance door.

Lounge 14'4" x 12'5" (4.37 x 3.81)



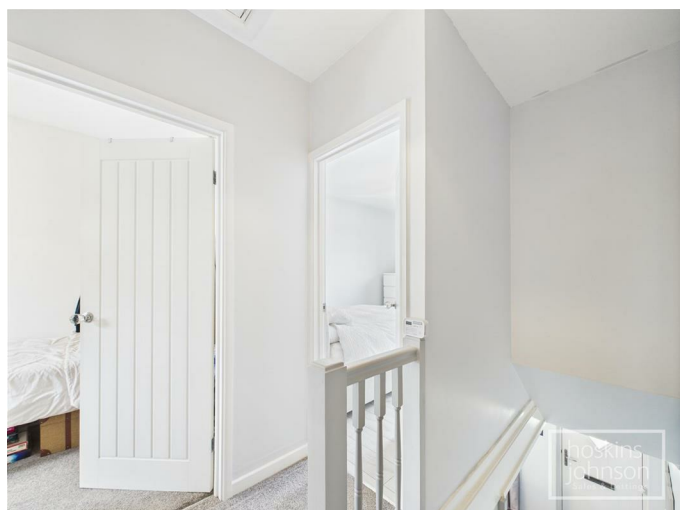
Double glazed window to front, radiator, coved ceiling, staircase to first floor, understairs cupboard.

Kitchen/Diner 12'4" x 10'2" (3.78 x 3.10)



Attractively refitted with a range of modern, grey base and wall cupboards with tiled splash backs, inset sink and mixer, ceramic hob with extractor hood above, electric oven & microwave, integral fridge, freezer, washing machine and dishwasher, space for table and chairs, LVT flooring, vertical radiator, double glazed window and french doors leading out to the garden.

First Floor Landing



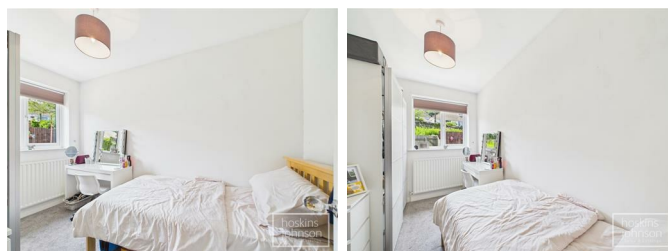
Access to bedrooms and shower room.

Bedroom 1 12'2" x 9'3" (3.71 x 2.82)



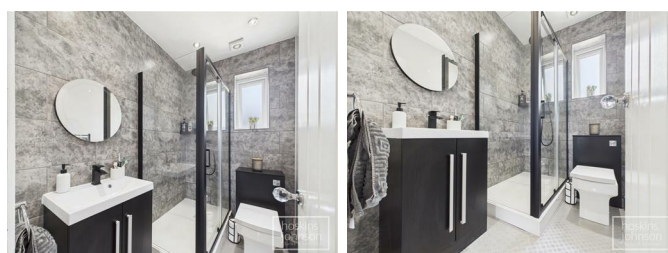
Double glazed window to front, radiator, laminated wood flooring, built in double wardrobe, airing cupboard with gas combination boiler.

Bedroom 2 12'4" x 7'2" (3.78 x 2.19)



Double glazed window to rear, radiator.

Shower Room



Modern refitted suite comprising large mains powered shower cubicle, wc, wash hand basin, part tiled walls, chrome heated towel rail, ceiling spotlights, double glazed window to rear.

Outside

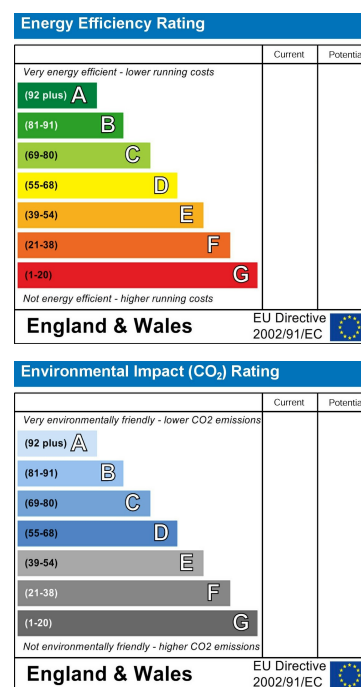
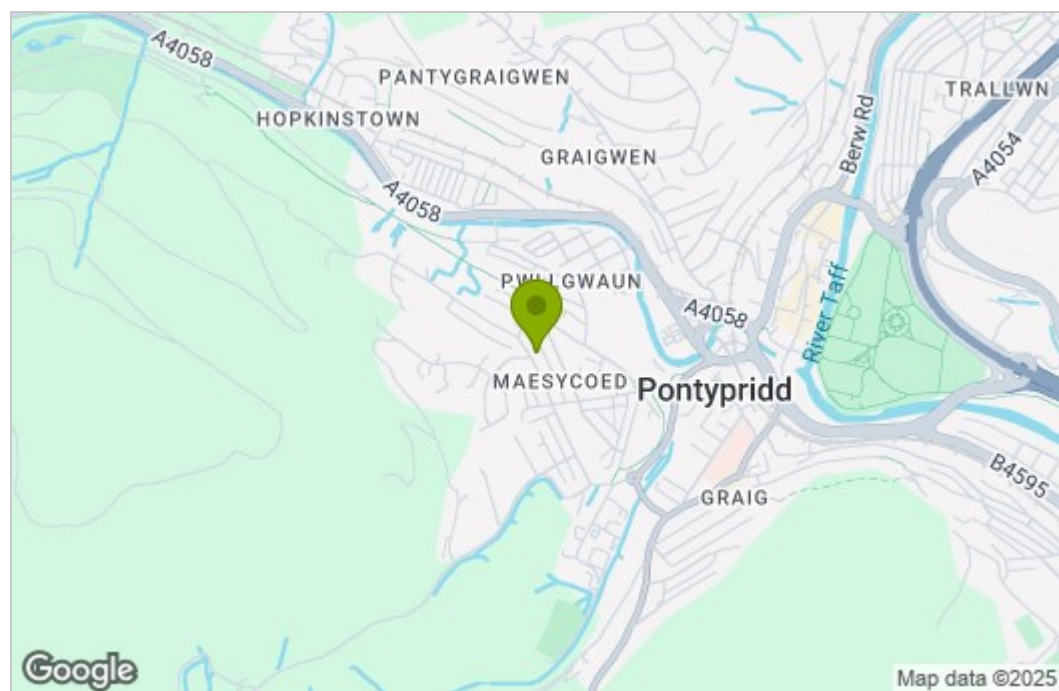


Elevated lawned front garden with off road parking. Gravelled and slatted seating area with steps to a second seating area and lawn with pedestrian access.

Floor Plan



Area Map



These particulars, whilst believed to be accurate are set out as a general outline only for guidance and do not constitute any part of an offer or contract. Intending purchasers should not rely on them as statements of representation of fact, but must satisfy themselves by inspection or otherwise as to their accuracy. No person in this firm's employment has the authority to make or give any representation or warranty in respect of the property.

22 Market Street, Pontypridd, CF37 2ST

Tel: 01443 404093 Email: pontypridd@hoskinsjohnson.co.uk www.hoskinsjohnson.co.uk